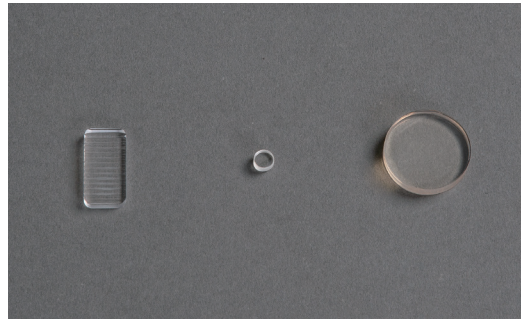


非球面系列产品 Aspheric series products



产品概述

非球面光学零件目前在光学系统中应用广泛，尤其是成像系统中非常重要的光学零件，常用的有抛物面镜、双曲面镜、椭球面镜等自由曲面。

产品介绍

非球面光学零件可以获得球面光学零件无可比拟的良好的成像质量，在光学系统中能够很好的矫正多种像差，改善成像质量，提高系统鉴别能力，它能以一个或几个非球面零件代替多个球面零件，从而简化仪器结构，降低成本并有效的减轻仪器重量。

加工优势

公司拥有具有先进的加工检测设备，如五轴加工中心，金刚石车床，离子束抛光机，马尔轮廓仪（德国）等。加工尺寸范围可达 $\Phi \leq 200\text{mm}$ ，加工面型精度 $\Phi \leq 30\text{mm}$ 精度可达到 $1/30\lambda$ ， $30\text{mm} \leq \Phi \leq 200\text{mm}$ 精度达到 $1/10\lambda$ 。

Product overview

Aspheric optical parts are currently widely used in optical systems, and are especially important optical parts in imaging systems, commonly used parabolic mirrors, hyperboloid mirrors, ellipsoidal mirrors and other free-form surfaces.

Product introduction

Aspheric optical parts can obtain good imaging quality that cannot be realized by spherical optical parts, and can well correct a variety of aberrations, improve imaging quality, and improve system identification ability in the optical system; it can replace multiple spherical parts with one or several aspheric parts, thereby simplifying the instrument structure, reducing costs and effectively reducing the weight of the instrument.

Processing advantages

The company has advanced processing and testing equipment, such as five-axis machining center, diamond lathe, ion beam polishing machine, Marl profiler (GER) and so on. The processing size range can reach $\Phi \leq 200\text{mm}$. The accuracy of machining surface type $\Phi \leq 30\text{mm}$ can reach $1/30\lambda$, and that of $30\text{mm} \leq \Phi \leq 200\text{mm}$ can reach $1/10\lambda$.